

# XPP

XML Professional Publisher

## Premier XML Publishing Solution

XPP, XML Professional Publisher, is an automated XML publishing software engine for complex and demanding publishing applications. This industry leading software solution automates the composition and pagination of XML or virtually any other source data to create high-quality output in PostScript or PDF format. It can also format other data formats such as database feeds, SGML, HTML, word processing files or ASCII text to create complex, well-formed pages. XPP provides superior XML and typographic support, combined with speed, power and throughput that is unmatched in the publishing industry.

For organizations that produce high-volume publications that require rapid turn-around, text and graphics input from multiple sources, and output in a variety of formats, XPP can automate manual processes that are often performed by simple desktop tools. When using XPP to turn XML and other encoded or structured data into fully formatted documents, a user can create complex tables, math equations, footnotes, tables of contents and indexes with relative ease. In addition to printed pages, XPP also enables the automatic creation of fully linked and cross-referenced Adobe Acrobat PDF documents suitable for delivery via the web.

Used as a standalone solution, or integrated with XyEnterprise's Content@ content management software, XPP provides a comprehensive end-to-end XML publishing solution. XPP also integrates well with other applications, providing a "back-end" automated publishing feature to a content management system, enterprise application, portal, or other web-oriented solution.

# XPP

XML Professional Publisher

## Advantages of XPP

- Integrates easily into an XML workflow
- Can be fed from databases, XML editors, content management systems, or structured word processing files
- Leverages native TIFF, EPS, JPEG, SVG and PDF graphics workflows
- Automatically creates hyperlinks in Acrobat PDF output using PDF marks
- Provides interactive editing capabilities for quick proofing, style development, and edits during production, where appropriate
- Sophisticated blacklining and change page management and control
- Powerful automated loose-leaf publishing capability
- Produces PostScript from XML automatically

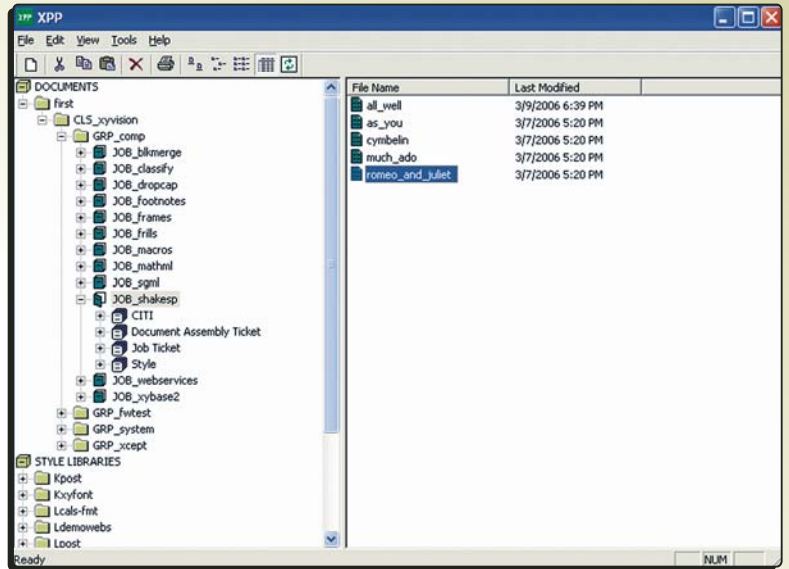
## Key Business Benefits

- Streamlines the process of turning XML, SGML and many other data types into print-ready PostScript output
- Eases administration of multiple style sheets for multiple languages and media
- Eliminates manual labor frequently required with desktop programs
- Improves typographic quality
- Shortens page turnaround time
- Expands production capabilities and enables cross-media publishing
- Scales to handle high-volume throughput

## System Requirements

**Server:** Windows 2000/2003, Sun Solaris, IBM AIX, HP-UX 11i

**Client:** Windows 2000/XP, UNIX



*The XPP interface enables users to manage and process content and styles in a variety of ways.*

## Key Product Features

- **XML Support:** Directly imports and exports XML data, including CALS table mark-up. Formats output based on XML tags, attribute values and hierarchy. Preserves XML structure and provides structural view of tags on each page.
- **Batch Composition:** Automates workflow by importing and formatting text, placing graphics, creating footnotes, sidebars and tables, and generating tables of contents and indexes.
- **Sophisticated Composition Controls:** User-definable macros to automate complex functions, extensive footnote capabilities, robust tabular and math composition, multiple-language hyphenation within a single document, with 30 languages offered, including Chinese, Korean, and Japanese.
- **PostScript and PDF Output:** Turns XML-coded data into high-quality PostScript or PDF output.
- **Integration with Web-based Solutions:** XPP offers a Web Services Development Kit that enables remote web-based access to XPP's powerful batch processing capabilities, as well as remote control of formatting via simple, tailored interfaces.

XyEnterprise™

### United States Headquarters

101 Edgewater Drive  
Wakefield, MA 01880-1296  
781.756.4400

### European Headquarters

Regus House  
268 Bath Road, Slough  
Berkshire SL 1 4DX  
United Kingdom  
44(0) 1753 725501

[www.xyenterprise.com](http://www.xyenterprise.com)